



GOVERNMENT OF INDIA
PRINCIPAL CHIEF COMMISSIONER OF INCOME TAX
KARNATAKA & GOA REGION, BENGALURU

CENTRAL REVENUE BUILDING, No.1, QUEEN'S ROAD, BENGALURU-560 001

Phone No: 080-22866306

Fax:080-22868223

Tender No.10/16-17/Pr.CCIT.

Dated: 16-09-2016

TENDER NOTIFICATION FOR INTERIOR WORK

1. The Principal Chief Commissioner of Income Tax, Bengaluru invites two bid tender [**Technical and Financial Bid**] from reputed agencies/firm/ individuals for carrying out interior works which include Civil, electrical and furnishing works as per the drawing and specifications of the tender document for O/o Dy. Controller of Accounts, RTC, 4th Floor, Unity Building Annexe, Mission Road, Bengaluru-560 027.
2. The Bidders are requested to obtain the Bid forms and other details from the Income Tax Officer (Infrastructure), O/o The Principal Chief Commissioner of Income Tax, Bengaluru, from the date of publication of tender notification on all working days between 11.00 hrs and 1.30 hrs upto 07-10-2016 by payment of Rs.500/-only by crossed demand draft drawn in favour of ZAO, CBDT, Bengaluru.
3. The Bid forms and all other details can also be downloaded from the website www.eprocure.gov.in/epublish/app/www.incometaxindia.gov.in/www.incometaxbangalore.in. The cost of the Bid document shall be paid separately as mentioned in the Bid document.
4. The timelines for submission and opening of bids are mentioned in the Bid document.

ISSUED BY:
INCOME TAX DEPARTMENT,
BENGALURU.

NOTICE INVITING TENDER

To

Sealed Tenders for interior works which include Civil, electrical and furnishing works as per the drawing and specifications for O/o Dy. Controller of Accounts, RTC, 4th Floor, Unity Building Annexe, Mission Road, Bengaluru-560 027 are invited by the Principal Chief Commissioner of Income Tax, Bengaluru from the Bidders with experience /financial/infrastructure/manpower capabilities in accordance with relevant clauses of the Bid Document.

1.1 The overall guidelines are as under:

1.2.1	Description of Scope of Work	Interior works which include Civil, electrical and furnishing works as per the drawing and specifications of Tender document
1.2.2	Type Of Bid	TWO BID- Technical and Commercial Bids
1.2.3	Earnest Money Deposit	Rs.60,000/- EMD is exempt to units registered with Central Purchase Organisation (DGS&D), national Small Industries Corporation(NSIC) or the Concerned Ministry or Department as defined under Rule 157 of General Financial Rules(GFR), 2005. A Copy of valid certificate shall be enclosed along with the technical bid for availing EMD Exemption.
1.2.4	Mode/Validity of E.M.D.	Crossed DD /Pay Order/ Bankers Cheque issued by Scheduled Banks drawn in favour of ' ZAO, CBDT, Bengaluru ' valid for at least 180 days from the date of Technical/Commercial Bid Opening.
1.2.5	Performance Bank Guarantee	5% of the successful price bid
1.2.6	Validity of performance Bank Guarantee	180 days after the date of completion of work.
1.2.7	Cost of Bid Document (Non-Refundable)	Rs.500/- only by crossed DD drawn in favour of ' ZAO, CBDT,BENGALURU '
1.2.8	Period/Dates & Time of issue of Bid Document	20/09/2016 To 07/10/2016 From 11.00 AM to 01.30 PM During Working Days

1.2.9	Time to Visit 4 th Floor, Unity Building Annexe, Mission Road, Bengaluru-560 027.	20/09/2016 To 27/09/2016 From 11.00 AM to 01.30 PM During Working Days
1.2.10	Pre-Bid meeting	28/09/2016 at 03.00 PM at the Kabini Hall, Second floor, CR Building, No.1, Queen's Road, Bengaluru-560 001. The Pre-bid meeting clarification, if any, will up be uploaded in website.
1.2.11	Date & Time of Closure of bid	13/10/2016 up to 11.00 AM
1.2.12	Date & Time of Opening of bid	13/10/2016 at 03.00 PM at the Kabini Hall, Second floor, CR Building, No.1, Queen's Road, Bengaluru - 560 001. In case it is not possible to open the bids on the stipulated dates due to unavoidable circumstances, the next date of opening will be duly informed.
1.2.13	Date & Time of opening of Commercial Bid	Shall be decided later and intimated to Bidders successful in Technical Bid.
1.2.14	Bid Validity	180 days from final date of submission of bids
1.2.15	Deposit of Bid Documents	One Single Envelope with Two Separate envelope ie [one marked as Technical Bid for Interior work for 4 th floor, Unity Building Annexe and other as Commercial Bid for Interior work for 4 th floor, Unity Building Annexe] and deposit in the Inward Section of the Office of the Principal Chief Commissioner of Income Tax, Karnataka & Goa Region, II Floor, Central Revenue Building, No:1, Queen's Road, Bengaluru-560 001.
1.2.16	Period of commencement of Work	Within 15 days of issue of letter of acceptance, failing which penalty per day @ 0.05% of the bid amount.

1.3 The bid process shall be as detailed in this Notice Inviting Tender [NIT].

1.4 The service providers are requested to study the full document before participating in the bid process and submit the Bid Forms enclosed, with signature on all the pages of the bid document as a proof of having read it.

1.5 Adopting unethical means will debar the bidder from the bidding process besides inviting other action as per rule.

(Dr SANDEEP GOEL)
Addl. Commissioner of Income Tax(Hq.)(Admn.),
O/o Principal Chief Commissioner of Income Tax,
Karnataka & Goa Region, Bengaluru.

Chapter-1

I. SCOPE OF WORK

1.1 Brief on interior work:

INTERIOR FURNISHING WORK **4th FLOOR, UNITY BUILDING ANNEXE, MISSION ROAD, BENGALURU-560 027.**

The Interior layout plan and specifications are as under

1. The layout plan.
2. Specifications

S.NO.	DESCRIPTION	QTY	UNIT
2.1	False roofing at DCA cabin: Providing and fixing 12mm thk. Gypsum India board false ceiling at levels as shown in the drg. From FFL. Rate shall be inclusive of all G.I. perimeter channels of size 0.55mm thick having one flange of 20mm and another flange of 30mm and a web of 27mm along with perimeter of ceiling, screw fixed to brick wall/partition with the help of nylon sleeves and screws, at 610mm centers. The suspending G.I. intermediate channels of size 45mm, 0.9mm thick with two flanges of 15mm each from the soffite at 1220mm centers with ceiling angle of width 25mm x 10mm x 0.55 thick fixed to soffite with G.I. cleat and steel expansion fasteners at every 610mm c/c. Ceiling sections of 0.55mm thickness having knurled web of 51.5mm and two flanges of 26mm each with lips of 10.5mm are then fixed to intermediate channel with the help of connecting clip and in direction perpendicular to the intermediate channel at 457mm centers. 12.5mm tapered edge Gyp board is then screw fixed to ceiling section with 25mm drywall screws driver or drilling machine with suitable attachment. The boards are to be jointed and finished so as to have a flush look which includes filling and finishing the tapered and square edge of the boards with jointing compound & joint paper tape. Rate shall be inclusive of Cut outs for A/c machines, spot lights, light fixtures; A/C. Grills, fire and security systems cut outs, All Sections should adhere to the manufacturer's guidelines. Vertical sides visible will be measured.	350	Sq.ft
2.2	8 mm thick calcium silicate false ceiling in DCA cabin toilet area: The false ceiling grid arrangements is made using formed G.I sections at a spacing of 400mm c/c the GI grid will be supported from the slab, using necessary GI supports. one end of the GI support should be anchored to the GI frame with necessary hardware After leveling the suspended GI frames with necessary supports as per specifications, 8mm thick calcium silicate sheet of required size to be fixed to the gi frames providing, supplying and erecting cutouts for light fittings, ac diffusers, exhaust and trap door	170	sqft

	provisions as per the detail drawings .		
2.3	<p>Supplying and fixing of Acoustic proof false ceiling at Class Room, Conference and server room area.</p> <p>Providing and fixing Armstrong (Fine Fissured Micro Look with Tagular Edge using 15mm Grid sections) false ceiling of size 24"x24" at levels as shown in the drawing. From FFL. Rate shall be inclusive of providing the total system with installation etc.</p>	1,600	Sq.ft
2.4	<p>Partly Glazed Full Height Partition :</p> <p>Providing and fixing partition framing shall consist of teak wood Section 65 mm x 65 mm (Wall Thickness 2 mm) @ 2'0" C/C Both ways Horizontally and Vertically. The framing shall be finished with 8 mm thick. Commercial ply. With mica lamination used complete & finished with both sides of ply by Provided 4" high skirting in 1.00 mm thick. Approved 1mm thick laminate to fix as per drawing and direction. Rate shall be inclusive of necessary hardware items, etc. Complete. but 10mm modi guard/saint gobian make clear float glass with itching as per given drawing shall be provided as directed by the architect. Fixed with ¾" teak wood moldings both sides duly polished.</p>	200	Sq.ft
2.5	<p>Glass partition:</p> <p>Supplying and fixing of hatched Toughen glass partition with door accessories between the wash area with necessary supports, hard wares, holdfasts, sealant up to 7 ft height</p>	70	Sqft
2.6	<p>Flush doors:</p> <p>Supply fabrication and erection of 32 mm ISI brand commercial Flush doors with both side laminating 1mm thick approved mica finish/ partially Glass, lock, hinges, tower bolt, teak beading edges, and ms holdfast etc., complete at server room.</p>	1	Nos.
2.7	<p>Flush doors:</p> <p>Supply fabrication and erection of 32 mm ISI brand commercial Flush doors with both side laminating 1 mm thick approved mica finish/ partially Glass, lock, hinges, tower bolt, teak beading edges, and ms holdfast etc., complete at DCA cabin.</p>	1	Nos.
2.8	<p>Wooden paneling at DCA cabin:</p> <p>Providing and fixing paneling on wall. Framing shall consist of Aluminum Section 50 mm x 40 mm (Wall Thickness 2 mm) @ 2'0" C/C. Both ways horizontally and vertically on the wall. This framing would be covered by 8mm thick. Ply with 1mm thick approved lamination as directed by Architect shall be provided wherever required.</p>	175	sqft
2.9	<p>Tables : at DCA Cabin</p> <p>Made up of 19mm commercial ply wood with mica lamination Main table 7'0"x3'0" Side table 4'0"x2'0" Providing and fixing in place table made of BWP grade 19 mm plywood of approved quality and make; finished with 1 mm thick mica lamination of approved</p>	1 1	No. No.

	design and make. All exposed edges of plywood to have wooden edge lipping of size 19mm X 6mm, as indicated. With adequate surface preparation as per the manufacturer's specifications. The table shall be provided with two pedestal storage units with drawers. The drawers shall be mounted on powder coated guide rails of approved colour and make. The drawers shall be made of 12 mm plywood sides with a bottom of 6 mm plywood. The rate should include provision of brushed steel handles of approved design and quality and all other necessary hardware. TW footrest of 75mm X 25mm finished, with French polish with adequate surface preparation, shall be fixed as indicated.		
2.10	Sofa: Supplying of 3 Seat Sofa with jute and artificial leather upholsteries at DCA Cabin Supplying sofa chairs of country wood frame for seat and high back and 4 legs complete with 19 mm thick commercial board base and cushion seat or as per design/drawings details made of 6" thick high density (40 HD) rubber cushion of classic or approved and tapestry at the rate of Rs.400/- per M i) Three seater ii) Two seater	1	No.
2.11	Centre Table: Made up of glass with Metal at DCA cabin (Readymade)	1	No.
2.12	Supplying of High back Revolving Executive Chair with leather upholsteries at DCA Cabin: Supplying chairs of following specifications complete as per drawings / requirements. The seat & back are made of 1.20cm thick hot pressed plywood upholstered with fabric and polyurethane foam together with molded ABS seat & back covers. The back foam should be designed with contoured lumber support for extra comfort having seat size 51x47 cm and back size 48x68cm approx. Overall size of the chair Depth 70 cm x width 70 cm x height 106 - 123.5cm seat ht. -44 - 45 cm The polyurethane foam should be molded with density =45 ± 2 kg/m ³ and hardness + 20 ± 2 kg on Hampden machine at 25% compression. The chair should be provided with a synchronic tilt mechanism which should offer features like forward tilt, self regulating tilt tension + Manual override, 4 position tilt locking and anti shock back mechanism which prevents the back rest from hitting the user when the lock should be released. The backrest consist of a drop lift mechanism, which can be adjusted in the range of 6.5 cm and can be locked in 5 steps for the better lumbar support. The chair should be provided with a gas lift mechanism for height adjustments. The pedestal should be injection molded in black 30% glass filled nylon. The pedestal should be 60 cm pitch centre Dia (70 cm with castors). The twin wheel castors are injection molded in black nylon. All metal components are epoxy polyester powder coated with dry film thickness of more than 45microns, salt spray test to withstand more than 1000 hrs, pencil scratch	1	No.

	hardness more than 2 H, other tests conforming to Class D, IS:6005:1970. Polyurethane arm rest, 5 twin wheel extra smooth castors.		
2.13	<p>Supplying of Visitors Chair medium back with artificial leather upholsteries at DCA Cabin: Supplying of Visitors Chairs medium back with fabric upholsteries at PAO Cabin The seat & back are made of 1.20cm thick hot pressed plywood upholstered with fabric and molded polyurethane foam, together with molded seat & back covers. The back foam should be designed with contoured lumber support for extra comfort. The size of chair 45cmx53cm (Back side) and 52cmx48cm (seat size). The polyurethane foam should be molded with density =45 ± 2 kg/m³ and hardness = 20 ± 2 kg on Hampden machine at 25% compression. The seat & back cover should be injection molded in black Co-polymer Polypropylene and back cover should be vacuum formed from 0.2cm thick black ABS sheets. One piece armrests are made of black integral skin polyurethane reinforced with MS insert with 50-70 Shore 'A' hardness. The armrests are scratch and weather resistant. The armrests are fitted to the seat with armrest brackets made of 0.5cm thick HR steel. Size 5.5cmx31 cm. The permanent contact mechanism is designed with 360° revolving type, 14° maximum back tilt only and tilt tension adjustment. The pneumatic height adjustment should be maintenance free, has an adjustment stroke of 12.5cm and can be operated at 30 kg extension force. The bellow should be 3 piece telescopic type and should be injection molded in black Polypropylene. The Pedestal should be injection molded in black 30% glass filled Nylon and fitted with 5 Nos. twin wheel castors (castor wheel Dia 5 cm). The pedestal should be 58 cm pitch centre Dia (68 cm with castors). The twin wheel castors are injection molded in black nylon and undergo the castor durability test, castor retention test, castor pull out test, castor wheel pull out test and castor breakability test.</p>	3	Nos.
2.14	<p>Window recesses paneling at DCA cabin: Providing and fixing paneling on windows. This framing would be covered by 19mm thick. Ply with 1mm thick approved lamination As directed by Architect shall be provided wherever required.</p>	70	Rft
2.15	Supplying and fixing of wooden blinds window curtains for at DCA Cabin	100	Sq.ft
2.16	Wooden laminated Flooring: PU cushion layers over the existing surface and wooden laminated flooring with edge profile	250	Sq.ft
2.17	<p>Wash basin counter unit: Providing and fixing laminated storage units 750mm high in Toilets. The unit shall be made of 19mm BWP grade plywood carcass with shutters of 12 mm thick plywood finished with 1.5mm thick laminate of approved colour/shade & make. Wooden lipping shall be used on all exposed, cut edges of plywood. The unit shall be finished with 20mm thk polished granite</p>	12	Sq.ft

	of approved colour/shade with half round nosing fixed to the wooden unit with Araldite water proof adhesive. The cost shall include necessary hardware like hinges, handles etc., complete as directed. (Cost of granite not to exceed Rs.1700/sqm)(elevation area to be considered for calculations)		
2.18	Mirror: Providing and fixing in toilets 8mm thick mirror of approved make with necessary backing of 6mm BWP grade plywood of approved make fixed with 50mm X 12 mm white cedar beading. The beading is to be finished with 3 coats of melamine polish with necessary surface preparation as specified by the manufacturer etc., complete.		L.S
2.19	Exhaust fan Supplying and fixing of approved brand Bajaj or Havels exhaust fan 10"dia for toilet	1	Nos
2.20	Vertical blinds for windows: Providing & fixing 100 mm wide vertical blinds of approved make complete with head rail of extruded anodized high strength aluminum alloy. Head rail shall have 25mm decorative insert on either side of head rail. Control units shall be 'Derlin' (Celon) and shall be of tilting control and traverse code pulleys. The runner shall molded from 'Derlin' (celon) with an antifriction additive. The spacer shall be made of stainless steel brackets for installation to be 14 gauge galvanized spring steel. Louver fabric shall be polyester viscous/ polyester yarn, died in fast colours job to be complete in all respects and to the approval of the Architect.	600	Sq.ft
2.21	Tables : For PAO Cabin: Made up of 25mm thick MDF with post forming edge Main table 5'0"x2'6" Side table 4'0"x2'0" Supplying and fixing of table made of MDF of approved quality and edge banding with approved strips and glue with adequate surface preparation as per the manufacturer's specifications. The table shall be provided with two pedestal storage units with drawers. The drawers shall be mounted on powder coated guide rails of approved colour and make. The rate should include provision of brushed steel handles of approved design and quality and all other necessary hardware.	1 1	No. No.
2.22	High back Revolving Executive Chair: Supplying of High back Revolving Executive Chair with fabric upholsteries at PAO Cabin The seat & back are made of 1.20cm thick hot pressed plywood upholstered with fabric and polyurethane foam together with molded ABS seat & back covers. The back foam should be designed with contoured lumber support for extra comfort having seat size 51x47 cm and back size 48x68cm approx. Overall size of the chair Depth 70 cm x width 70 cm x height 106 - 123.5cm seat ht. -44 - 45 cm. The polyurethane foam should be molded with density =45 ± 2 kg/m ³ and hardness + 20 ± 2 kg on Hampden machine at 25% compression. The chair should be provided with a synchronic tilt mechanism which should offer features	1	No.

	<p>like forward tilt, self regulating tilt tension + Manual override, 4 position tilt locking and anti shock back mechanism which prevents the back rest from hitting the user when the lock should be released. The backrest consist of a drop lift mechanism, which can be adjusted in the range of 6.5 cm and can be locked in 5 steps for the better lumbar support. The chair should be provided with a gas lift mechanism for height adjustments. The pedestal should be injection molded in black 30% glass filled nylon. The pedestal should be 60 cm pitch centre Dia (70 cm with castors). The twin wheel castors are injection molded in black nylon. All metal components are epoxy polyester powder coated with dry film thickness of more than 45microns, salt spray test to withstand more than 1000 hrs, pencil scratch hardness more than 2 H, other tests conforming to Class D, IS:6005:1970. Polyurethane arm rest, 5 twin wheel extra smooth castors.</p>		
2.23	<p>Visitors Chairs: Supplying of Visitors Chairs medium back with fabric upholsteries at PAO Cabin The seat & back are made of 1.20cm thick hot pressed plywood upholstered with fabric and molded polyurethane foam, together with molded seat & back covers. The back foam should be designed with contoured lumber support for extra comfort. The size of chair 45cmx53cm (Back side) and 52cmx48cm (seat size). The polyurethane foam should be molded with density =45 ± 2 kg/m³ and hardness = 20 ± 2 kg on Hampden machine at 25% compression. The seat & back cover should be injection molded in black Co-polymer Polypropylene and back cover should be vacuum formed from 0.2cm thick black ABS sheets. One piece armrests are made of black integral skin polyurethane reinforced with MS insert with 50-70 Shore 'A' hardness. The armrests are scratch and weather resistant. The armrests are fitted to the seat with armrest brackets made of 0.5cm thick HR steel. Size 5.5cmx31 cm. The permanent contact mechanism is designed with 360° revolving type, 14° maximum back tilt only and tilt tension adjustment. The pneumatic height adjustment should be maintenance free, has an adjustment stroke of 12.5cm and can be operated at 30 kg extension force. The bellow should be 3 piece telescopic types and should be injection molded in black Polypropylene. The Pedestal should be injection molded in black 30% glass filled Nylon and fitted with 5 Nos. twin wheel castors (castor wheel Dia 5 cm). The pedestal should be 58 cm pitch centre Dia (68 cm with castors). The twin wheel castors are injection molded in black nylon and undergo the castor durability test, castor retention test, castor pull out test, castor wheel pull out test and castor breakability test.</p>	3	Nos.
2.24	<p>Conference Table: Made up of 25mm thick MDF with post forming edge Main table 5'0"x2'6" Side table 4'0"x2'0"</p>	1	No.

	Supplying and fixing of table made of MDF of approved quality and edge banding with approved strips and glue with adequate surface preparation as per the manufacturer's specifications. The table shall be provided with two pedestal storage units with drawers. The drawers shall be mounted on powder coated guide rails of approved colour and make. The rate should include provision of brushed steel handles of approved design and quality and all other necessary hardware.		
2.25	Conference room chair: Supplying of medium back Revolving chair with artificial leather upholsteries for Conference room The seat & back are made of 1.20cm thick hot pressed plywood upholstered with fabric and polyurethane foam together with molded ABS seat & back covers. The back foam should be designed with contoured lumber support for extra comfort having seat size 51x47 cm and back size 48x68cm approx. Overall size of the chair Depth 70 cm x width 70 cm x height 106 - 123.5cm seat ht. -44 - 45 cm The polyurethane foam should be molded with density =45 ± 2 kg/m ³ and hardness + 20 ± 2 kg on Hampden machine at 25% compression. The chair should be provided with a synchronic tilt mechanism which should offer features like forward tilt, self regulating tilt tension + Manual override, 4 position tilt locking and anti shock back mechanism which prevents the back rest from hitting the user when the lock should be released. The backrest consist of a drop lift mechanism, which can be adjusted in the range of 6.5 cm and can be locked in 5 steps for the better lumbar support. The chair should be provided with a gas lift mechanism for height adjustments. The pedestal should be injection molded in black 30% glass filled nylon. The pedestal should be 60 cm pitch centre Dia (70 cm with castors). The twin wheel castors are injection molded in black nylon. All metal components are epoxy polyester powder coated with dry film thickness of more than 45microns, salt spray test to withstand more than 1000 hrs, pencil scratch hardness more than 2 H, other tests conforming to Class D, IS:6005:1970. Polyurethane arm rest, 5 twin wheel extra smooth castors and other features as shown in the illustration. Fabric costing	20	Nos.
2.26	Modular workstation: Providing and fixing of modular workstation with 75mm thick partition fabricated out of powder coated MS Frame work and laminated MDF panel with firm 1200MM Height and 5'0"x5'0" corner unit including pinup board or marker board/magnetic board	280	Sq.ft
2.27	Providing MDF Table top size of 3'0"x3'0" and 2'0"x2'0" with 25mm Thick post forming	136	Sq.ft
2.28	Supplying and fixing of PVC Key board	8	Nos.
2.29	Supplying and fixing of wooden CPU Trolley.	8	Nos.
2.30	providing mobile drawer Unit with one Drawer and one cupboard, post forming finish	8	Nos.
2.31	Providing Leg panel Size 2'0"x2'6" 25mm Thick with both side laminating MDF	12	Sq.ft

2.32	<p>Supplying of revolving and hydraulic type workstation chair : Supplying of medium back Revolving chair with artificial leather upholsteries for Conference Table The seat & back are made of 1.20cm thick hot pressed plywood upholstered with fabric and polyurethane foam together with molded ABS seat & back covers. The back foam should be designed with contoured lumber support for extra comfort having seat size 51x47 cm and back size 48x68cm approx. Overall size of the chair Depth 70 cm x width 70 cm x height 106 - 123.5cm seat ht. -44 - 45 cm The polyurethane foam should be molded with density =45 ± 2 kg/m³ and hardness + 20 ± 2 kg on Hampden machine at 25% compression. The chair should be provided with a synchronic tilt mechanism which should offer features like forward tilt, self regulating tilt tension + Manual override, 4 position tilt locking and anti shock back mechanism which prevents the back rest from hitting the user when the lock should be released. The backrest consist of a drop lift mechanism, which can be adjusted in the range of 6.5 cm and can be locked in 5 steps for the better lumbar support. The chair should be provided with a gas lift mechanism for height adjustments. The pedestal should be injection molded in black 30% glass filled nylon. The pedestal should be 60 cm pitch centre Dia (70 cm with castors). The twin wheel castors are injection molded in black nylon. All metal components are epoxy polyester powder coated with dry film thickness of more than 45microns, salt spray test to withstand more than 1000 hrs, pencil scratch hardness more than 2 H, other tests conforming to Class D, IS:6005:1970. Polyurethane arm rest, 5 twin wheel extra smooth castors.</p>	8	Nos.
2.33	<p>Training Room Stage: Supplying and fabrication of MS Square frames and covered by 19 mm ISI brand commercial ply wood with floor matching vinyl sheet all the sides and edge L” profiles etc complete.</p>	54	Sq.ft
2.34	<p>Providing of class room tables : using 19mm commercial ISI plywood with both side mica lamination as per the Design</p>	25	Nos.
2.35	<p>Supplying of class room chairs: Supplying of medium back Revolving chair with artificial leather upholsteries for Conference Table The seat & back are made of 1.20cm thick hot pressed plywood upholstered with fabric and polyurethane foam together with molded ABS seat & back covers. The back foam should be designed with contoured lumber support for extra comfort having seat size 51x47 cm and back size 48x68cm approx. Overall size of the chair Depth 70 cm x width 70 cm x height 106 - 123.5cm seat ht. -44 - 45 cm The polyurethane foam should be molded with density =45 ± 2 kg/m³ and hardness + 20 ± 2 kg on Hampden machine at 25% compression. The chair should be provided with a synchronic tilt mechanism which should offer features like forward tilt, self regulating tilt tension + Manual</p>	25	Nos.

	<p>override, 4 position tilt locking and anti shock back mechanism which prevents the back rest from hitting the user when the lock should be released. The backrest consist of a drop lift mechanism, which can be adjusted in the range of 6.5 cm and can be locked in 5 steps for the better lumbar support. The chair should be provided with a gas lift mechanism for height adjustments. The pedestal should be injection molded in black 30% glass filled nylon. The pedestal should be 60 cm pitch centre Dia (70 cm with castors). The twin wheel castors are injection molded in black nylon. All metal components are epoxy polyester powder coated with dry film thickness of more than 45microns, salt spray test to withstand more than 1000 hrs, pencil scratch hardness more than 2 H, other tests conforming to Class D, IS:6005:1970. Polyurethane arm rest, 5 twin wheel extra smooth castors.</p>		
2.36	<p>Painting: Providing & applying plastic emulsion paint on walls, columns & ceilings. The rate shall include scrapping, leveling & preparing the surface. Primer coat (Asian/ICI dulex) (minimum) 3 coats to get evenly spread quality finish (roller finish) of approved make, quality & finish shall be provided as directed by / Architect. Finish with wall putty wherever necessary before plastic emulsion paint)</p>	8000	Sq.ft
2.37	<p>Vinyl flooring: Supplying and fixing of 1.5mm Thick vinyl flooring for class Room area (LG OR ARMSTRONG)</p>	5000	Sq.ft
2.38	<p>Server room table : Supplying and fixing of table made of MDF of approved quality and edge banding with approved strips and glue with adequate surface preparation as per the manufacturer's specifications. The table shall be provided with two pedestal storage units with drawers. The drawers shall be mounted on powder coated guide rails of approved colour and make. The rate should include provision of brushed steel handles of approved design and quality and all other necessary hardware. server room table</p>	2	Nos
2.39	<p>Supplying of revolving and hydraulic type chair : medium back with PU arms at ups room The seat & back are made of 1.20cm thick hot pressed plywood upholstered with fabric and polyurethane foam together with molded ABS seat & back covers. The back foam should be designed with contoured lumber support for extra comfort having seat size 51x47 cm and back size 48x68cm approx. Overall size of the chair Depth 70 cm x width 70 cm x height 106 – 123.5cm seat ht. -44 – 45 cm The polyurethane foam should be molded with density =45 ± 2 kg/m³ and hardness + 20 ± 2 kg on Hampden machine at 25% compression. The chair should be provided with a synchronic tilt mechanism which should offer features like forward tilt, self regulating tilt tension + Manual override, 4 position tilt locking and anti shock back mechanism which prevents the back rest from</p>	2	Nos.

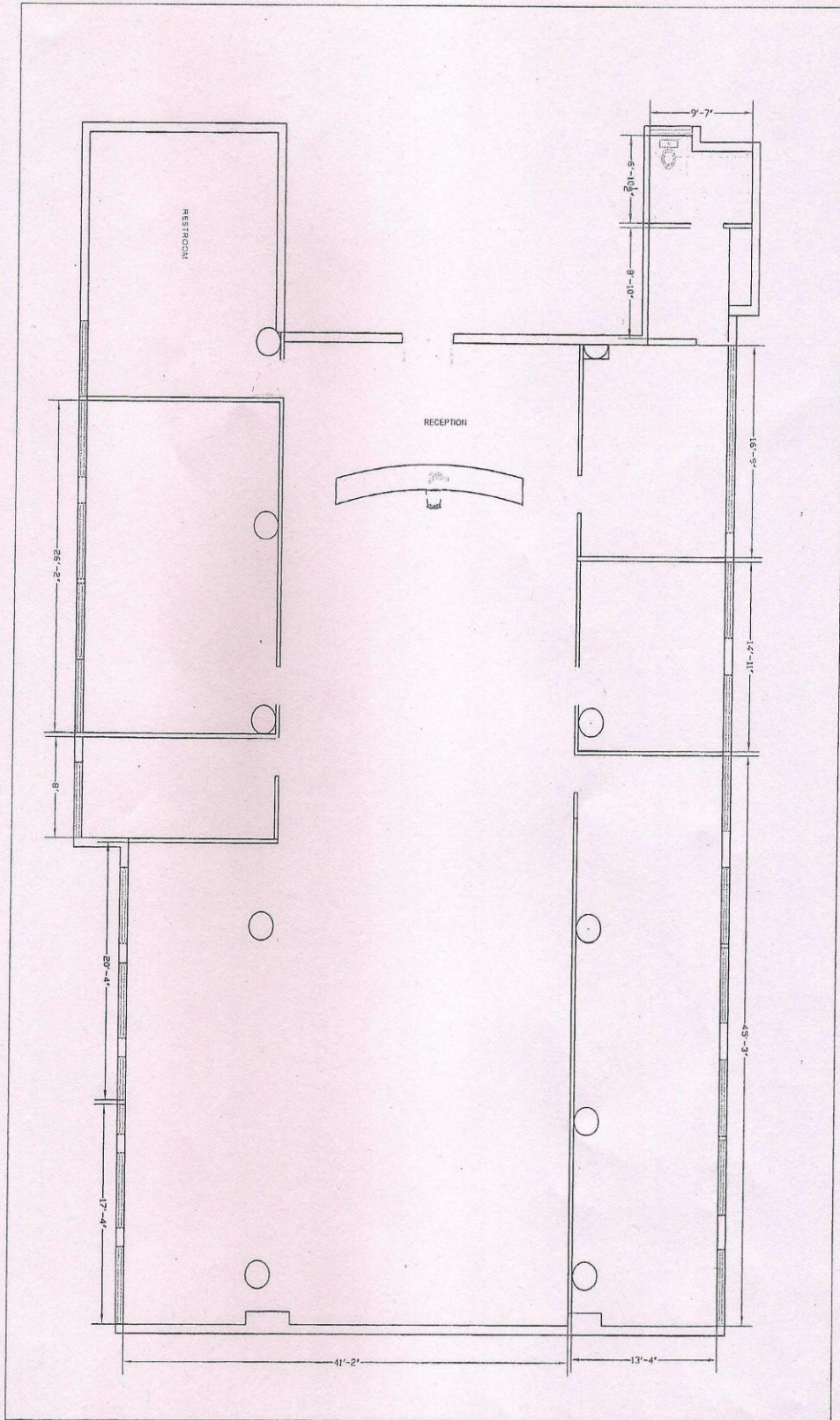
	hitting the user when the lock should be released. The backrest consist of a drop lift mechanism, which can be adjusted in the range of 6.5 cm and can be locked in 5 steps for the better lumbar support. The chair should be provided with a gas lift mechanism for height adjustments. The pedestal should be injection molded in black 30% glass filled nylon. The pedestal should be 60 cm pitch centre Dia (70 cm with castors). The twin wheel castors are injection molded in black nylon. All metal components are epoxy polyester powder coated with dry film thickness of more than 45microns, salt spray test to withstand more than 1000 hrs, pencil scratch hardness more than 2 H, other tests conforming to Class D, IS:6005:1970. Polyurethane arm rest, 5 twin wheel extra smooth castors and other features as shown in the illustration.		
2.40	Visitor area chairs: Metal with high quality perforated combined chair for visitor entry area.	1	Nos
2.41	Center Tables (1'-6" X 2'-6" X 1'-6"): Providing and making corner / side tables of above mentioned size as per architectural drawing. Table top shall consist of 12 mm. Thick. Float glass with chamfered edge (beveled edge) fitted to the frames with necessary arrangement. The base shall be made up ply wood with mica lamination	1	No.
2.42	Entrance wall paneling work: Providing and fixing paneling on wall. Framing shall consist of Aluminum Section 50 mm x 40 mm (Wall Thickness 2 mm) @ 2'0" C/C. Both ways horizontally and vertically on the wall. This framing would be covered by 8mm thick. Ply with 1mm thick approved lamination As directed by Architect shall be provided wherever required.	90	Sqft

Terms and Conditions:

1. The bidder should have a valid PAN card, Sales tax/VAT and Service Tax registration. A self-attested copy of the documents is to be enclosed in Technical bid.
2. The bidder should be a agencies/firm/individuals having experience in undertaking Interior work.
3. **Turnover:** Gross business receipts of the bidder should be more than Rs.20 Lakhs during the FY 2014-15. A copy of the Return of Income (AY 2015-16) filed along with a certificated copy of the accounts (FY 2014-15) should be enclosed.
4. **Earnest Money Deposit (EMD):** EMD of Rs. 60,000/- (Rupees Sixty thousand only) in the form of Demand Draft/ Banker's Cheque of Nationalised bank drawn in favour of "Zonal Accounts Officer, Bengaluru" has to be presented.

- 5. Security Deposit:** The successful bidder has to submit 5% of the value of the bid amount for Interior work as security deposit in the form of Bank Guarantee from nationalized bank in favour of "Principal Chief Commissioner of Income Tax, Karnataka & Goa Region, Bengaluru" only after which the work order will be issued. The Bank Guarantee shall be released after completion of the 180 days from the date of completion of work. The security deposit will be withheld in the event of the vendor not honouring the commitment with regard to the timely completion of work and not adhering to quality and specification as per bid.
- 6.** The EMD of the successful bidders shall be released after submission of security deposit equivalent to 5% of the value of the work order. EMD will be returned to all the unsuccessful bidders at the end of selection process.
- 7.** The bidder should have experience carrying out interior work at any organization (Government/Private/Autonomous body/Banks/PSU/Hotels/Educational institutions, etc.) in Bengaluru anytime during the last two financial years i.e. FY 2014-15 and FY 2015-16.
- 8.** The bidder shall complete the work within one month of receipt of work order.
- 9.** No advance payment will be made by the Department.
- 10.** Financial bid shall indicate Taxes/Duties/Charges (Other taxes / duties / charges if any to be mentioned separately otherwise the price will be treated as inclusive of all).
- 11.** The bidder shall sign and stamp each page of the tender and all other enclosures appended to it as a token of having read and understood the terms and conditions contained herein and submit the same along with the qualifying bid.
- 12.** The bidder will not sublet or transfer any part of the work.
- 13.** During the period of the execution of work, change in rates will not be entertained under any circumstances.
- 14.** The Department shall take all necessary steps to make payment for the interior work after submission of the "Completion Certificate" certified by the Concerned Authority.

Sd/-
(Dr SANDEEP GOEL)
Addl. Commissioner of Income Tax(HQ)(Admn),
O/o Principal Chief Commissioner of Income Tax,
Karnataka & Goa Region, Bengaluru.



PROPOSED OFFICE FURNISHING WORK
 FOR CBDT .DCA CABIN AT UNIT BUILDING
 BANGALORE

DATE : 30.04.16 SCALE 1:100

TECHNICAL BID

The Technical Bid should be as given below and should be supported by the documents indicated. The demand draft/bankers' cheque in respect of 'Earnest Money Deposit' should be submitted with the 'Technical bid'

1	Name and address of the Bidder.	
2	Telephone No./ Fax No./Mobile No.	
3	Website/e-mail address.	
4	Permanent Account Number (PAN) (provide proof).	
5	Details of VAT & Service Tax registration (Provide proof).	
6	A brief note on the background of the bidder including professional qualifications and experience in the field of designing and carrying out interior work at any organization (Government/Private/Autonomous body/ Banks/ PSU/ Hotels/Educational institutions, etc.) office/ commercial Proof of being the Manufacturers/ Authorised distributors of the brand.	
7	Details of Demand Draft/Banker's enclosed. Cheque in respect of EMD. Cheque in respect of Cost of Bid –document.	
9	Certified financial statements (FY 14-15) and a copy of the IT Returns (AY 15-16) as required by Pt.(3) of the Terms and Conditions.	
8	Details and proof of orders fulfilled during the last two years as required by Pt.(7) of the Terms and Conditions.	

DECLARATION

I /we hereby certify that the information furnished above is true and correct to the best of my/our knowledge. I/we understand that in case any deviation is found in the above statement at any stage. I /we will be blacklisted, my/our earnest Money Deposit (EMD) forfeited and that I/we will not have any dealing with the Department in Future.

Place:

Signature of Bidder

Date:

Name:

FINANCIAL BID

1	Name of the vendor	
2	Address(with Tel. No. & Email)	
3	Contact Person(s) (with mobile No. & Email)	
4	Layout plan	
5	(i) Cost of Civil works* (ii) Cost of Electrical work* (iii) Cost of furnishing* *Break up of Taxes, duties, other charges, etc. to be shown separately and detailed estimate of each work to be enclosed.	Rs. _____ Rs. _____ Rs. _____
6	Cumulative cost of the project ie. Aggregate of cost quoted above. Gross Total	

(The applicable taxes shall be shown separately in percentage and amount)

DECLARATION

I/we hereby certify that the information furnished above is true and correct to the best of my/our knowledge. I/we understand that in case any deviation is found in the above statement at any stage. I /we will be blacklisted and will not have any dealing with the Department in future.

Place:

Signature of Bidder

Date:

Name:

FORMAT PERFORMANCE SECURITY GUARANTEE BOND FORM

1. In consideration of the Office of the Principal Chief Commissioner of Income Tax, Karnataka & Goa Region, Bengaluru, having agreed to exempt _____(hereinafter called the said Vendor from the demand under the terms and conditions of an Work order No._____dated _____(hereinafter called the said work order), of security deposit for the due fulfillment by the said Vendor of the terms and conditions contained in the said work order, on production of a bank guarantee for _____we (name of the Bank) _____(hereinafter referred to as 'the Bank') at the request of _____(Vendor do hereby undertake to pay to Office of the Principal Chief Commissioner of Income Tax, Karnataka & Goa Region, Bengaluru, an amount not exceeding _____against any loss or damage caused to or suffered or would be cause to or suffered by Office of the Principal Chief Commissioner of Income Tax, Bengaluru, by reason of any breach by the said Vendor of any of the terms or conditions contained in the said work order.

2. We (name of the Bank) _____do hereby undertake to pay the amount due and payable under this guarantee without any demur, merely on a demand from Office of the Principal Chief Commissioner of Income Tax, Bengaluru, stating that the amount claimed is due by way of loss or damage cause to or suffered by the Office of the Principal Chief Commissioner of Income Tax, Bengaluru, by the reason of breach by the said Vendor of any terms or conditions contained in the said work order or by reason of the vendor failure to perform the said work order. Any such demand made on the bank shall be conclusive as regards the amount due and payable by the Bank under this guarantee where the decision of Office of the Principal Chief Commissioner of Income Tax, Bengaluru, in these count shall be final and binding on the bank. However our Liability under this guarantee shall be restricted to an amount not exceeding_____.

3. We undertake to pay to Office of the Principal Chief Commissioner of Income Tax, Bengaluru, any money so demanded notwithstanding any dispute or dispute raised by the Vendor in any suit or proceeding pending before any court or tribunal relating there to our liability under this present being absolute and unequivocal. The payment so made by us under this bond shall be valid discharge or our liability for payment there under and the Vendor shall have no claim against us for making such payment.

4. We (name of the bank) _____ further agree that the guarantee herein contained shall remain in full force and effect during the period that would be taken for the performance of the said work order and that it shall continue to be enforceable till all the dues of the dues of Office of the Principal Chief Commissioner of Income Tax, Bengaluru, under or by virtue of the said work order have been fully paid and its claims satisfied or discharged or till Office of the Principal Chief Commissioner of Income Tax, Bengaluru, certifies that the terms and conditions of the said work order have been fully and properly carried out by the said Vendor and accordingly discharges this guarantee. Unless a demand or claim under the guarantee is made on us in writing on or before the expiry of 180 days from the date hereof, we shall be discharged from all liability under this guarantee thereafter.

5. We (Name of the Bank)_____further agree with Office of the Principal Chief Commissioner of Income Tax, Bengaluru, that the Office of the Principal Chief Commissioner of Income Tax, Bengaluru, shall have the fullest liberty without affecting in any manner our obligation hereunder to verify any of the terms and conditions of the said work order or to extend time of performance by the said contractor from time to time or to postpone for any time or from time to time any of the powers exercisable by the Office of the Principal Chief Commissioner of Income Tax, Bengaluru, against and said Vendor and forbear or enforce any of the terms and

conditions relating to the said work order and we shall not be relieved from our liability by reason of any such variation, or extension being granted to the said Vendor or for any forbearance, act or omission on the part of Office of the Principal Chief Commissioner of Income Tax, Bengaluru, or any indulgence by Office of the Principal Chief Commissioner of Income Tax, Bengaluru to the said Vendor or by any such matter or thing whatsoever which under the law relating to sureties would, but for this provision, have effect of so relieving us.

6. This guarantee will not be discharged due to the change in the constitution of the Bank or the Vendor.

7. We (name of the Bank)_____lastly undertake not to revoke this guarantee during its currency except with the previous consent of Office of the Principal Chief Commissioner of Income Tax, Bengaluru, in writing.

Dated the day of for

(Indicate the name of the Bank)